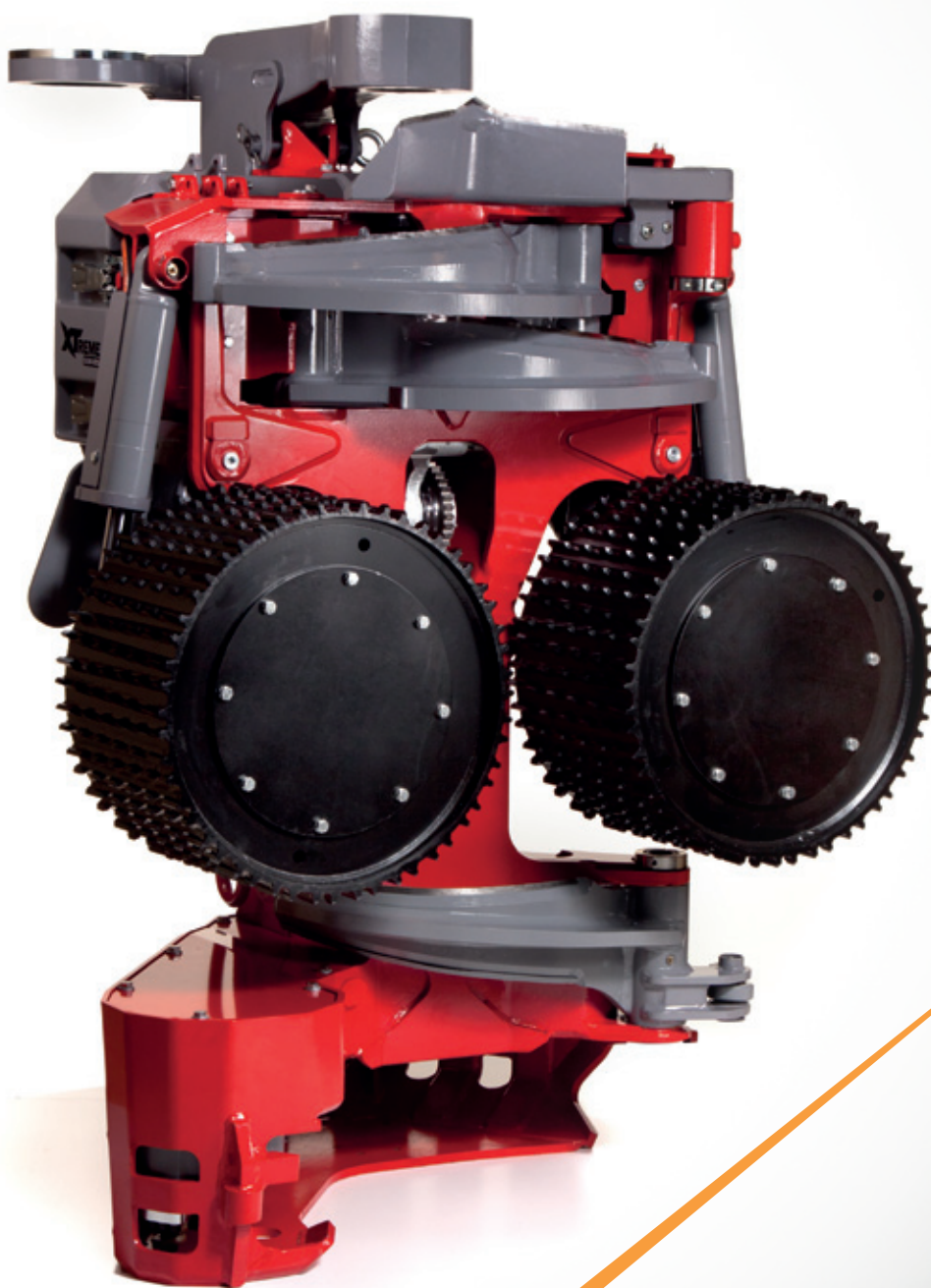


# **Log Max**<sup>®</sup> 7000XT

HEADS ABOVE THE COMPETITION



[www.logmax.com](http://www.logmax.com)

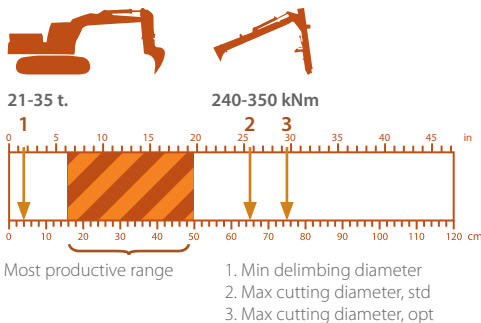
# HEAVY DUTY BUILD FOR THE MOST EXTREME OPERATIONS



The new XTreme series from Log Max are heavy-duty harvesting heads specifically designed for tracked carriers.

With a choice of harvester or dedicated processor configuration, the Log Max XTreme Series meets the demands of the toughest operations.

The XT Series has been developed to provide the logging industry with a productive and durable head for the most extreme applications and to produce wood at the lowest cost per tonne possible.



**Feed roller options**  
Steel, V-Steel, Eucalyptus

**Optional equipment**  
Field repair kit,  
Find end sensor,  
Snow cover,  
Processor knives,

DIMENSIONS	METRIC	IMPERIAL
Height (Harvester with Top Saw / Processor with Top Saw)	2 176 / 1 449 mm	85.6" / 57"
Weight (Harvester / Processor) incl. feed rollers	2 078 / 2 058 kg	4,581 lbs / 4,537 lbs
Sound effect*	110 dB	110 dB
FEEDING		
Two feed rollers with variable displacement axial piston motors	660-1 320 cc.	40-81 cu.in
Optional: Two feed rollers with fixed displacement motors	1 259 cc.	
Feed force std/opt	45/42,6 kN	10,115/9577 lbf
Feed speed std/opt	5,2/4,1 m/sec	17.1/13.5 fps
Maximum roller opening	713 mm	27.6"
CUTTING / DELIMITING		
Bar length / Maximum cut capacity	up to 90 cm / cut up to 80 cm	up to 34" / cut up to 29,7"
Maximum full coverage delimiting diameter	560 mm	22"
Minimum hydraulics requirements for acceptable performance	250 l/min	66 gpm
CONTROL SYSTEM		Log Mate 402 / CabsWin

\*This value is measured according to EN ISO 3744:2009 with an accuracy of ±2 dB (A) under publication EA-4/16:2003. The value is measured when the saw cuts with maximum speed without any load.